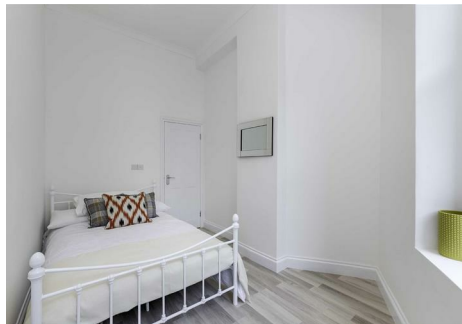




THE ESTATE COMPANY



Grittleton Road, Maida Vale, London, W9 2DD

£465,000

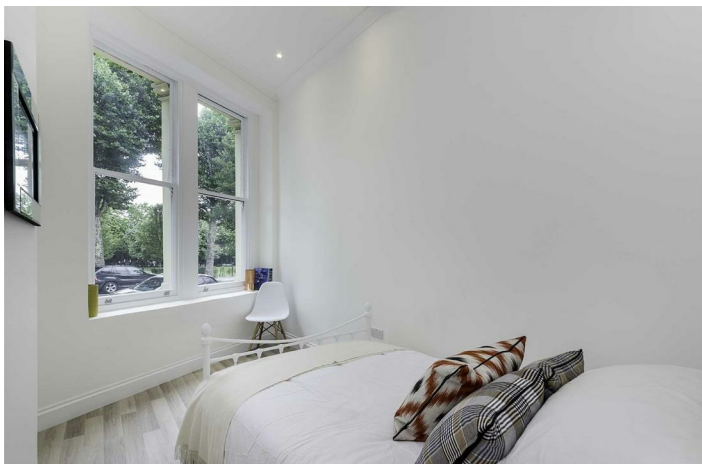
- Sole Agent
- Raised Ground Floor
- Wood Flooring
- 448 Sq Ft
- Two Bedroom Apartment
- Modern Kitchen
- Share of Freehold

18 Grittleton Road, London W9 2DD

A bright and spacious two bedroom (448 Sq Ft) raised ground floor apartment benefitting from a Share of Freehold and views into the open spaces of Tamplin Mews Gardens. The apartment has been refurbished to a high standard including a modern kitchen and bathroom as well as wood flooring throughout. Grittleton Road is located within walking distance of the cafés and restaurants of Maida Vale as well as Maida Vale underground station and Paddington recreation ground.

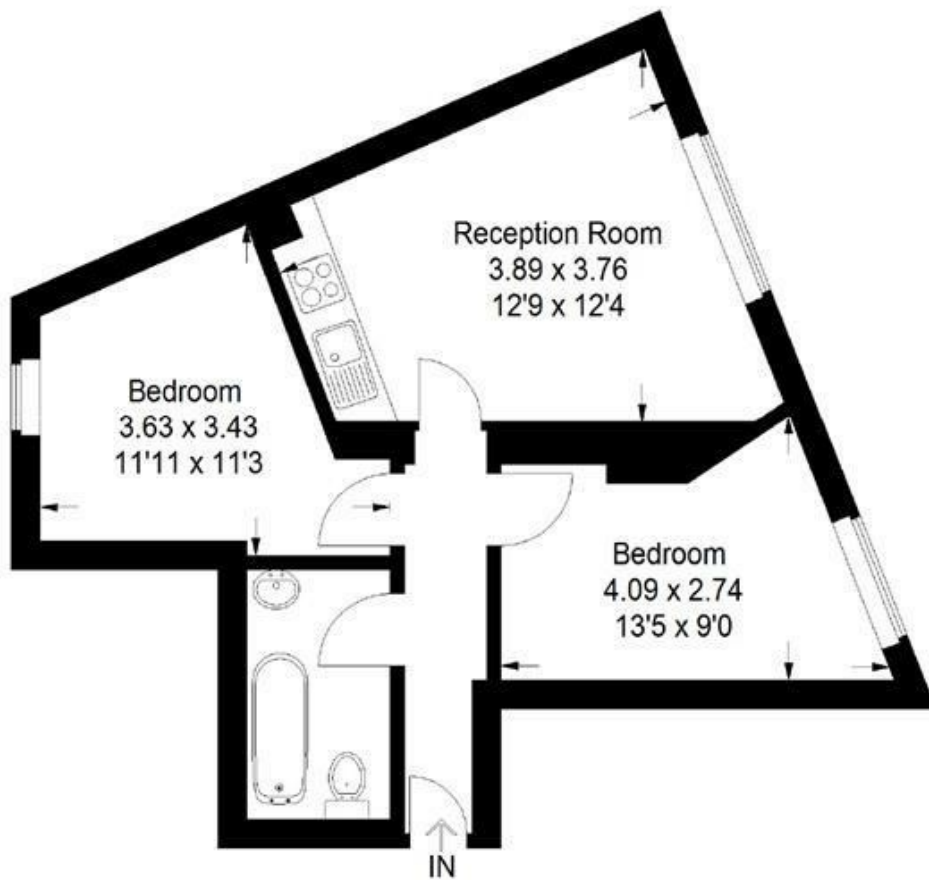


Council Tax Band: C



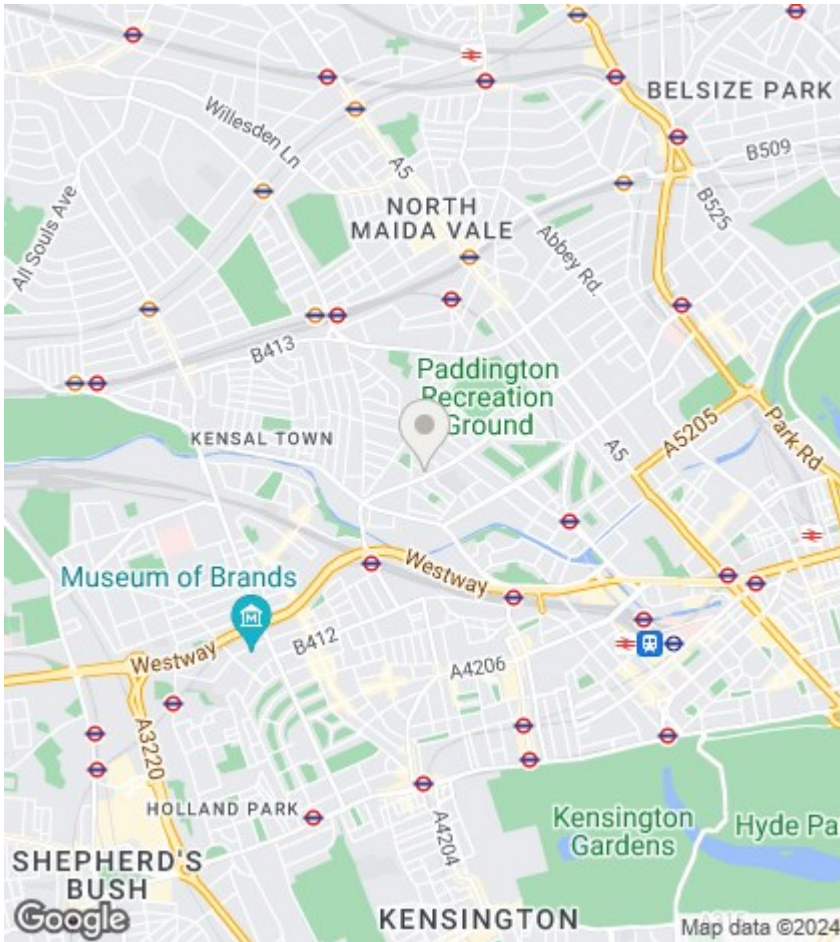
6,14 Grittleton Road, W9 2DD

Approximate Gross Internal Area
41.6 sq m / 448 sq ft



Ground Floor

Illustration for identification purposes only, measurements are approximate, not to scale.
FloorplansUsketch.com © 2017 (ID 360458)



Viewings

Viewings by arrangement only. Call 020 7372 5000 to make an appointment.

EPC Rating:

D

Energy Efficiency Rating		Current	Potential
Very energy efficient - lower running costs			
(92 plus) A			
(81-91) B			87
(69-80) C			
(55-68) D		66	
(39-54) E			
(21-38) F			
(1-20) G			
Not energy efficient - higher running costs			
England & Wales		EU Directive 2002/91/EC	